

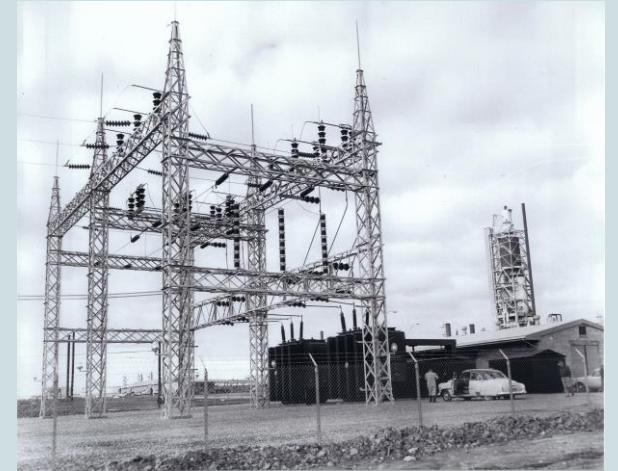
ENERGY

WHATCOM P.U.D.

Electric System | Authorities | Services Snapshot

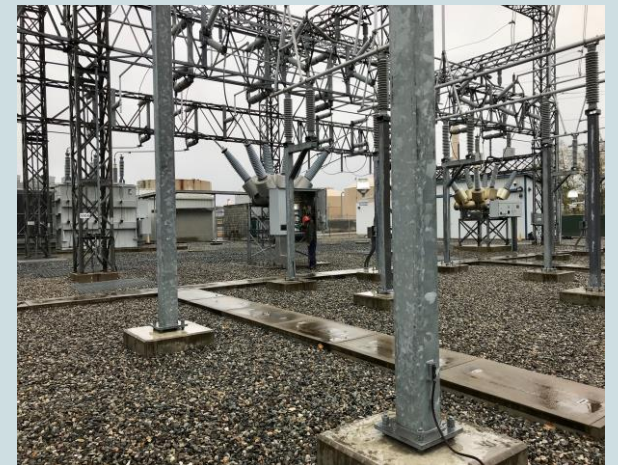
The Electric Utility Then

- Electric system energized in 1952 to serve new oil refinery (General Petroleum)
- Power supply obtained initially from Pend Oreille PUD, then BPA
- Power transported over BPA regional transmission network
- Electric facilities consisted of one substation and 12.7 miles of 115 kV radial line



The Electric Utility Now

- Electric system serves three industrial loads: 1 Refinery & 2 PUD water treatment plants
 - Total system electric load is approx. 27.2 Average Megawatts (238,272 MWhs/Yr.)
- BPA supplies 100% of PUD's power supply requirements to meet system load
 - Contract expires September 30, 2028
- Electric system has two interconnections with other utilities' systems
 - PUD has transmission agreements with BPA and PSE
- Electric facilities consist of three substations and 13.5 miles of 115 kV line



WHATCOM P.U.D.

Electric System | Authorities | Services Snapshot

Small Electric Utility Footprint vs. Expansive Statutory Authorities

- **Power Supply:** Authority to purchase and sell electric energy (from all sources) and associated energy attributes (i.e. capacity, ancillary services, RECs);
- **Generation and Transmission Facilities:** Authority to finance, build, own, operate electric system facilities (all generation types);
- **Clean Fuel Technologies:** Authority to support and participate in hydrogen and bio fuels projects;
 - Can buy and sell project output
 - Construct facilities
 - Transport fuels and inject in pipelines
- **Financing of Projects:** Authority to issue municipal bonds and to levy taxes;
- **Joint Action:** Authority to pursue the above solely or with other entities:
 - Joint Operating Agencies (Energy Northwest)
 - Mutual Non-Profit Corporations (NoaNet – Telecommunications)
 - Interlocal Agreements (PUD/Blaine, PUD/Sumas, PUD/Skagit PUD)
 - Public-Private Partnerships (White Creek Wind Project)

WHATCOM P.U.D.

Electric System | Authorities | Services Snapshot

Unique Attributes of Electric Utility that Foster Opportunities

- Historical relationship with BPA as a public agency preference customer
 - First access to federal power at lowest available rate
- P.U.D. has no bundled electric rate tariffs
 - Services provided via contract and rates are un-bundled;
- Local governance provided by locally elected Commissioners
 - P.U.D. not regulated by the Washington Utilities and Transportation Commission (WUTC)
- P.U.D. has no embedded and owned generation in its power supply portfolio;
 - Can tailor power supply to its customer needs
- Historical focus of utility operations has been on Cherry Point Industrial Zone
 - P.U.D. provides electric and water services to all Cherry Point industries

WHATCOM P.U.D.

Electric System | Authorities | Services Snapshot

Future Opportunities are Limitless

- Support and participate in development of clean fuel industries within Cherry Point:
 - *Example:* Renewable Diesel Plant – Green Apple project
 - *Example:* Hydrogen by Electrolysis Plant – Douglas County P.U.D. is a leader
- Support and participate in development of bio gas projects within Whatcom County:
 - *Example:* P.U.D. support for county manure methane digesters
 - *Example:* Natural gas pipeline injection of bio gas – Klickitat County P.U.D. is a leader
- Support and participate in locally-sited renewable energy projects:
 - Large scale and community scale solar, wind, and energy storage projects
- Support and participate in public/private partnerships to develop clean fuel and renewable energy projects and provide supply to customers:
 - *Example:* P.U.D. power supply procurement to supply municipal load aggregator
 - Partnership could consist of City of Bellingham, P.S.E. and the P.U.D.